



Keravive by Hydrafacial Improves Scalp Health and Supports Hair Quality and Growth

About the Study:

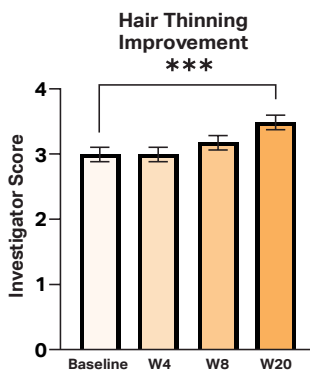
44 adult patients with varying degrees of hair thinning and hair recession (men with Norwood Scale score of 2, 3 or 3 Vertex and women with Ludwig Classification of Type I-1, I-2 or I-3) were enrolled to receive a series of 3 in-office Keravive by Hydrafacial treatments once per month and daily application of the Keravive Peptide Complex spray solution for 5 months. Investigator and patient assessments were performed at baseline, after each treatment, and at a follow-up visit 2 months after the last treatment.

Treatment Protocols:

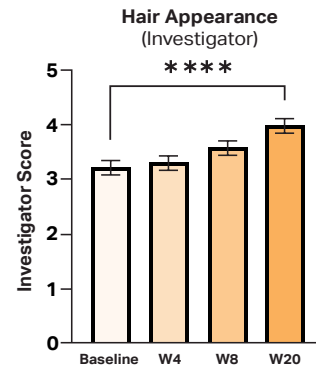
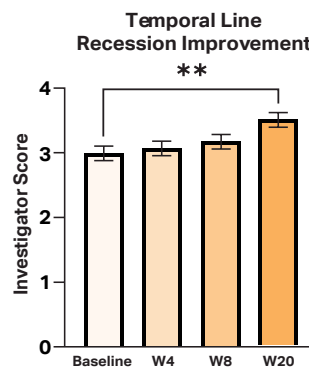
Each patient received Keravive by Hydrafacial treatments with the Hydrafacial Elite machine. The treatment consisted of a cleansing and purification step with Hydrafacial's Extract® Solution and a nourishing step with the Keravive Peptide Complex serum. Patients used the Keravive Peptide Complex take-home spray daily for 5 months. The Keravive Peptide Complex solution contains a proprietary selection of nanoliposome-encased biomimetic polypeptides, skin proteins, amino acids, and conditioning agents and humectants optimized for scalp health.

Highlights:

Investigators reported a statistically significant reduction in hair thinning, temporal line recession, and improvement in hair appearance at the final assessment visit.



1 = extreme hair thinning / recession
5 = no hair thinning / recession



1 = significantly dull and unhealthy
5 = highly shiny and healthy

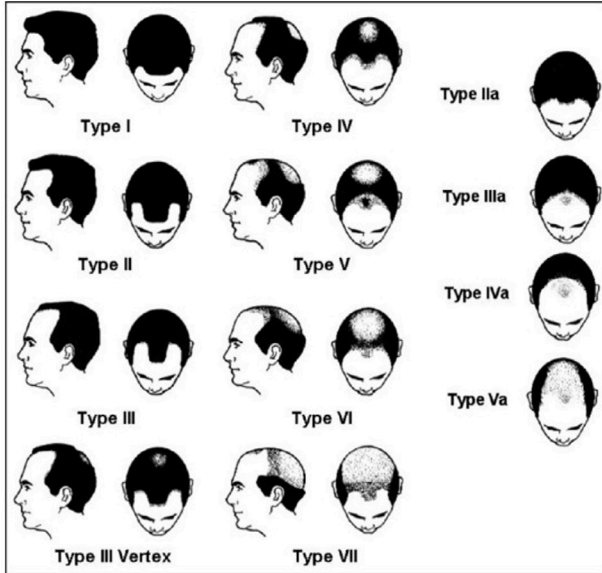
Subjects reported:

- Reductions in bothersome scalp symptoms (decreased itchiness, dryness, flakiness).
- Progressive improvement in their hair health (53% of patients) and fullness (69%).
- 82% of subjects reported their hair looked healthier, shinier, and showed less gray strands.
- 75% observed improved hair fullness
- Reduced hair loss (64% of patients) and increased hair growth (49%).
- Significant improvement in confidence in their appearance

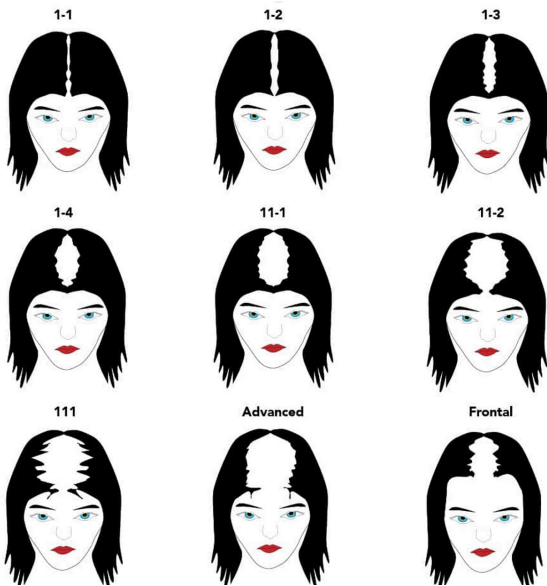




Classification of Patterned Hair Loss



Norwood's classification of patterned hair loss in males



Ludwig classification of patterned hair loss in females